

Flat 7 36 Demesne Road, Whalley Range, Manchester, M16 8HJ

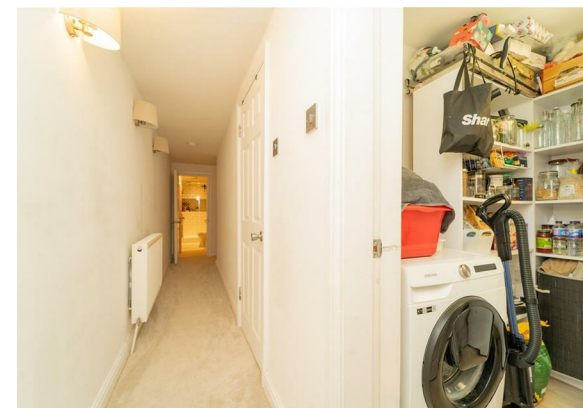


JP&Brimelow
ESTATE AGENTS

Offers In The Region Of £215,000

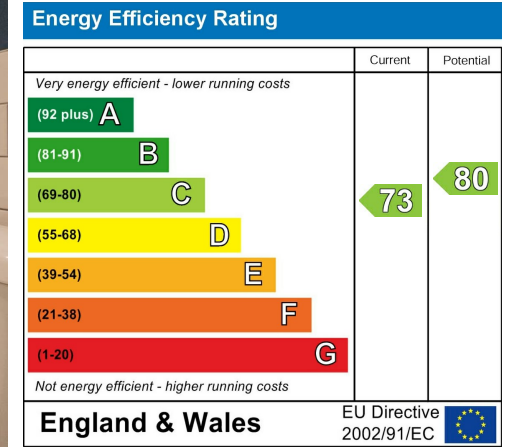


VIDEO TOUR AVAIBLE A stylishly presented, TWO DOUBLE BEDROOM, lower ground floor apartment with its own private entrance and outdoor space. Situated in this attractive period conversion positioned on Demesne Road here in Whalley Range off Alexandra Road South. With Alexandra Park a two-minute walk away the location couldn't be better. With other local amenities nearby in Chorlton and excellent transport links on your doorstep giving you the commuter direct access into the City Centre or Manchester International Airport. The well-planned apartment consists of; a private entrance hallway, a delightful open plan lounge/ kitchen area which benefits from access out to the private patio. Additionally, there is two large useful storage cupboards, two good sized double bedrooms one benefitting from an en-suite bathroom, a white three-piece shower room complete this delightful apartment. The apartment benefits from gas fired central heating, an alarm system, a private rear South facing enclosed patio terrace and communal off-road parking to the rear.



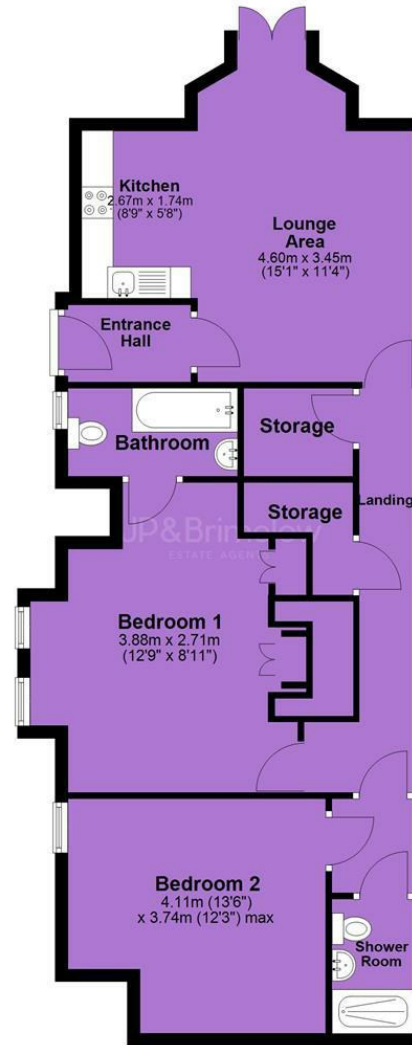


EPC Chart



Tenure: **Leasehold** Council Tax Band: **A**

Basement



JP & Brimelow Estate Agents Ltd
430 Barlow Moor Road, Manchester, M21 8AD
Tel: 0161 8822233
E: sales@jpbrimelow.co.uk www.jpandbrimelow.co.uk



JP & Brimelow
ESTATE AGENTS

NOTICE: JP & Brimelow Estate Agents Ltd for themselves and for the vendors or lessors of this property whose agents they are give notice that:

- the particulars are set out as a general outline only for the guidance of intending purchasers or lessees, and do not constitute, nor constitute part of, an offer or contract;
- all descriptions, dimensions, references to the condition and necessary permissions for use and occupation, and other details are given in good faith and are believed to be correct but any intending purchasers or tenants should not rely on them as statements or representations of fact but must satisfy themselves by inspection or otherwise as to the correctness of each of them;
- no person in the employment of JP & Brimelow Estate Agents Ltd has any authority to make or give any representation or warranty whatever in relation to this property.

jpandbrimelowstateagents

@jpandbrimelow